

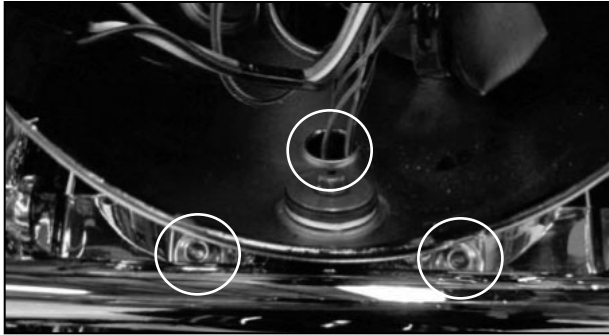


ADDENDUM A
PASSING LIGHT INSTALLATION INSTRUCTIONS
XV17AS(C), ASS(C), ATS(C) ASSEMBLY MANUAL
LIT-11666-17-09

**NOTE: This Addendum applies only to 2005 XV17ATT(C), ATMT(C) models.
Place this booklet at the rear of the Assembly Manual.**

ADDENDUM A
PASSING LIGHT INSTALLATION INSTRUCTIONS
2005 XV1700ATT(C), ATMT(C)

(Addendum to XV17AS(C), ASS(C), ATS(C) Assembly Manual LIT-11666-17-09)

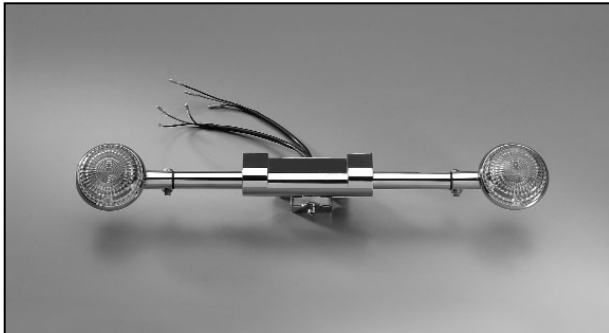


PASSING LIGHT INSTALLATION

NOTE: Perform this procedure before performing the Windshield instructions on page 9.

1. Remove the headlight rim assembly mounting screws (qty. 2).

- Remove the headlight rim assembly from the head light housing.
- Disconnect the headlight wire from the headlight and remove the headlight rim assembly.

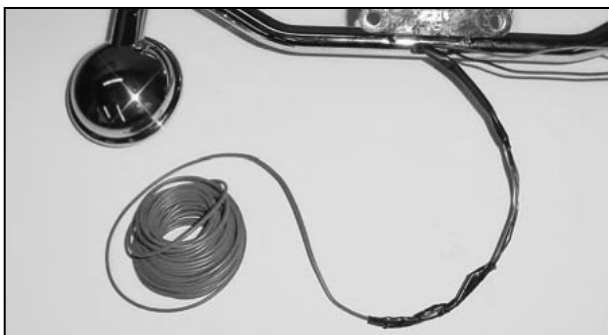


2. Locate and disconnect the turn signal wires (2 blue, 2 black, 1 dark brown, and 1 dark green).

- Remove the lower headlight housing bolt (qty 1), turn signal mount bolts (qty. 2), and remove the turn signal mount with the turn signals attached.



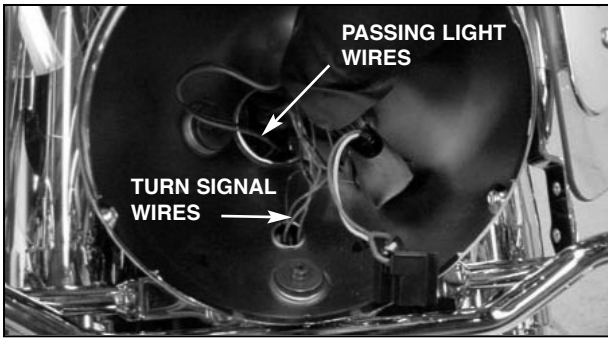
3. Remove the turn signals from the original turn signal mount (original turn signal mount is no longer used). Install them on the passing light mount using the original screws and nuts (right signal has blue, black, and dark green wires) (left signal has blue, black, and dark brown wires).



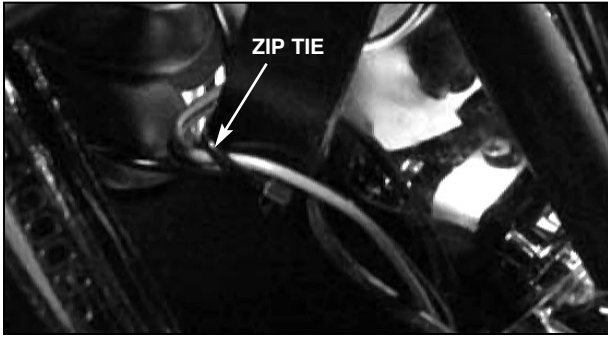
- After installing the turn signals on the passing light bracket, use a piece of wire and tape to pull the turn signal wires through the passing light mount.



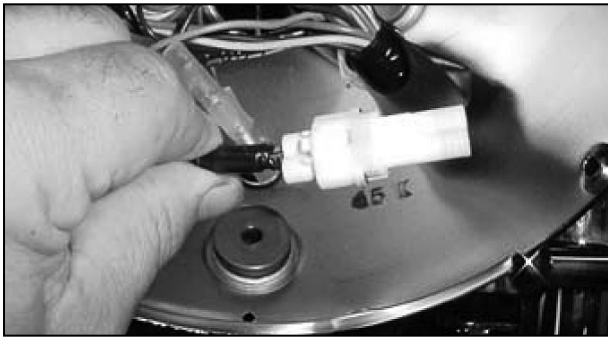
4. Install the fully assembled passing light mount to the lower fork clamp (same position as the original turn signal mount) using the supplied bolts (8x40mm, qty. 2), washers (qty. 2) and the original lower headlight mount bolt and washer.



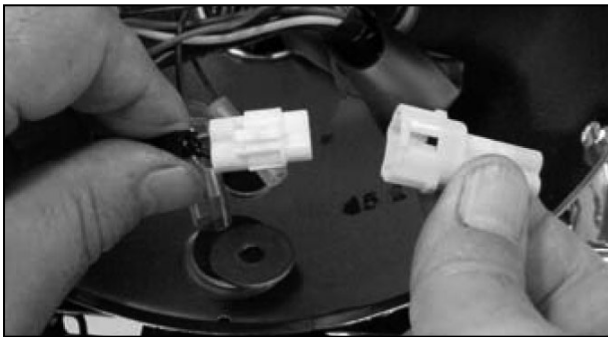
5. Route the turn signal wires into the headlight housing through the small hole at the bottom of the housing.
 - Route the passing light wires through the large hole at the rear of the headlight housing and secure them to the headlight mount with a zip tie.



6. Connect the turn signal wires to their original color coded connectors.
 - Locate the 2-pin white colored passing light connector inside the headlight housing.
 - Remove the blank dust cover.



7. Install the passing light wire connector to this connector.
8. Reinstall the headlight and confirm correct operation of the headlight, turn signals, and passing lights.



NOTE: This passing light system is equipped with a relay that allows passing light operation only when the engine is running.

NOTE: Two collars are provided in the passing light hardware kit. These can be used in place of the lower windshield mount if the customer wishes to permanently remove the windshield.

NOTE: Some passing light hardware kits contain a fuse assembly which is not used for passing lights installed on 2005 XV1700ATT(C), ATMT(C) models.